

# THE *Vinings* OF OLDE IVY

L U X U R Y P A T I O H O M E S

**New Model Home Coming Spring 2021**



**2391 E Cardinal Lot #32**

**2403 E Cardinal Lot #31**

Perfect for downsizing, the new, luxury patio homes built by MGM Properties in the popular Olde Ivy neighborhood are a must see! The quality built, all brick, one-level, 3-bedroom patio homes offer open-concept floor plans and high-end finishes. Amenities include hardwood floors, custom cabinets, center islands, granite & quartz countertops, stainless steel appliances with gas cooktops, wall ovens, large walk-in pantries, gas-log fireplaces and spacious living areas for entertaining family and guests. Magnificent master suites with luxurious baths spacious walk-in closets and ample storage throughout! The exteriors offer covered patios, level lots in the Olde Ivy community with access to the neighborhood swimming pool. Conveniently located near Springfield's Living Memorial Park, the Nature Center and Farmers Park, with restaurants, shopping and medical facilities nearby. Low maintenance, energy efficient homes and designed for today's lifestyle. Call today!

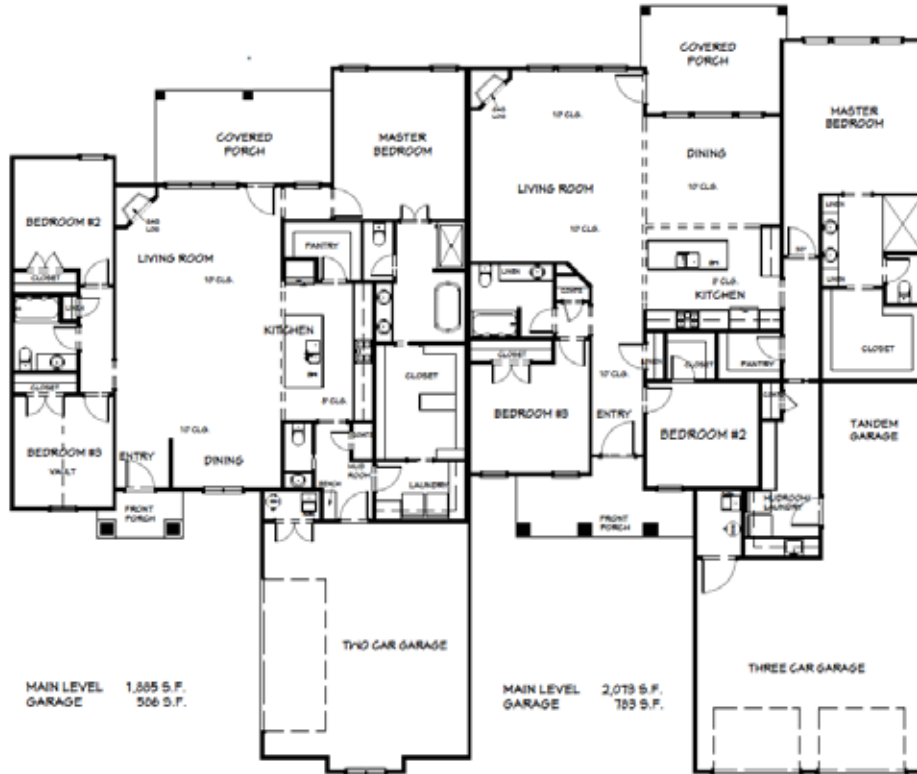
**P|M PATRICKMURNEY**  
417.575.1208

**DONNA CLEOUS**  
417.880.2512

**M MURNEY ASSOCIATES REALTORS®**  
1625 E. PRIMROSE ST | SPRINGFIELD, MO 65804 | MURNEY.COM

# THE Vinings OF OLDE IVY

New Model Home Coming Spring 2021



MGM PROPERTIES, INC.  
VININGS OF OLDE IVY  
LOT #31 #32

© COPYRIGHT - 2019 DALE PEER - HOME DESIGN, INC.  
These documents may not be reproduced in any form without written consent from Dale Peer - Home Design, Inc. & MGM Properties, Inc.

## 2391 E Cardinal Lot #32

- 1,866 Square Feet m/1
- 3 Bedrooms
- 2- ½ Baths
- 2-Car Garage
- MLS#
- \$375,000

## 2403 E Cardinal Lot #31

- 2,096 Square Feet m/1
- 3 Bedrooms
- 2 Baths
- 3-Car Garage
- MLS#
- UNDER CONTRACT

**P|M** PATRICKMURNEY  
417.575.1208

**DONNA CLEOUS**  
417.880.2512

**M MURNEY ASSOCIATES REALTORS®**

1625 E. PRIMROSE ST | SPRINGFIELD, MO 65804 | MURNEY.COM

# THE *Vinings* OF OLDE IVY

L U X U R Y P A T I O H O M E S

New Model Home Coming Spring 2021



**2371 E Cardinal Street Lot #34**

**2381 E Cardinal Street Lot #33**

Perfect for downsizing, the new, luxury patio homes built by MGM Properties in the popular Olde Ivy neighborhood are a must see! The quality built, all brick, one-level, 3-bedroom patio homes offer open-concept floor plans and high-end finishes. Amenities include hardwood floors, custom cabinets, center islands, granite & quartz countertops, stainless steel appliances with gas cooktops, wall ovens, large walk-in pantries, gas-log fireplaces and spacious living areas for entertaining family and guests. Magnificent master suites with luxurious baths spacious walk-in closets and ample storage throughout! The exteriors offer covered patios, level lots in the Olde Ivy community with access to the neighborhood swimming pool. Conveniently located near Springfield's Living Memorial Park, the Nature Center and Farmers Park, with restaurants, shopping and medical facilities nearby. Low maintenance, energy efficient homes and designed for today's lifestyle. Call today!

**P|M PATRICKMURNEY**  
417.575.1208

**DONNA CLEOUS**  
417.880.2512

**M MURNEY ASSOCIATES REALTORS®**

1625 E. PRIMROSE ST | SPRINGFIELD, MO 65804 | MURNEY.COM

# THE *Vinings* OF OLDE IVY

New Model Home Coming Spring 2021



## 2371 E Cardinal Street Lot #34

- 2,071 Square Feet m/1
- 3 Bedrooms
- 2 1/2 Baths
- 2-Car Garage
- MLS
- \$

## 2381 E Cardinal Street Lot #33

- 1,958 Square Feet m/1
- 3 Bedrooms
- 2 Baths
- 2-Car Garage
- MLS
- \$

**P|M** **PATRICKMURNEY**  
417.575.1208

**DONNA CLEOUS**  
417.880.2512